



Smart Valve Positioner TS800 Series

- Quick and easy auto calibration
- Flapper / Nozzle type Torque motor
- By-pass valve (A/M switch) installed
- HART communication (HART 7)
- PST & Alarm & Diagnostic function

Smart Valve Positioner TS800/TS805 Series

Description

TS800 Smart Valve Positioner controls the valve stroke in response to an input signal of 4-20mA from the control panel, DCS, or calibrator.

Features



TS800 Standard type



TS805 Stainless steel 316 type



TS800 with Limit switch type

Certified



- + Quick and easy auto calibration
- + Large flow pilot valve (Over than 100LPM)
- + Flapper / Nozzle type Torque motor
- + By-pass valve (A/M switch) installed
- + HART communication (HART 7)
- + Limit switch (Mechanical or Proximity type)
- + Partial stroke test (PST) function
- + Alarm function
- + Self diagnostic

TS820 (Remote type)

TS820 Body



TS820 Sensor



Interface structure



- | | |
|---|--|
| <ol style="list-style-type: none"> 1. LCD 2. Button (4) 3. Alarm modules 4. Input signal (4~20mA DC) 5. Ground | <ol style="list-style-type: none"> 6. Position transmitter (Option) <ul style="list-style-type: none"> - 2 Wire - 4~20mA DC feedback signal 7. Limit switch (Option) <ul style="list-style-type: none"> - Mechanical type - Proximity type |
|---|--|

Smart Valve Positioner TS800/TS805 Series

Specifications

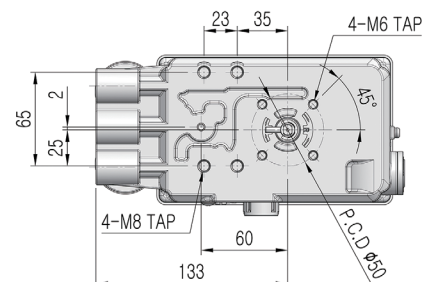
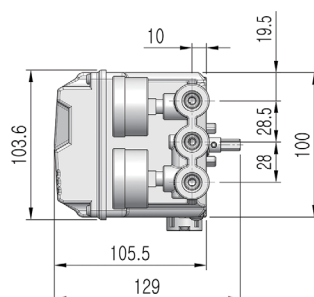
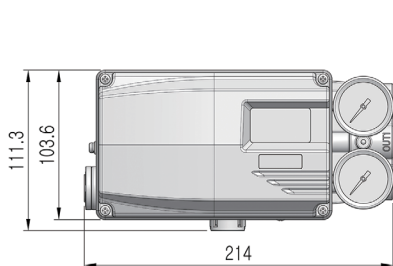
Model	TS800	TS805
Input signal	4~20mA DC	
Impedance	500Ω at 20mA DC	
Supply pressure	0.14~0.7MPa	
Stroke	10~150mm (Linear), 0~90° (Rotary)	
Air connection	PT1/4, NPT1/4, G1/4	
Gauge connection	PT1/8, NPT1/8	
Conduit	G1/2, NPT1/2, M20	
Explosion proof type	II 2G Ex ia IIC T5/T6 Gb II 2D Ex ia IIIC T100°C/85°C Db IP66	
Enclosure	IP66 (EN60529)	
Ambient Temp.	Standard type	-30°C~85°C
	Low temp type	-40°C~85°C
	Explosion proof	-40°C~60°C(T5) / -40°C~40°C(T6)
	LCD operating	-30°C~85°C
Linearity	±0.5% F.S.	
Sensitivity	±0.2% F.S.	
Hysteresis	±0.5% F.S.	
Repeatability	±0.3% F.S.	
Air consumption	Below 2.3LPM (Sup=0.14MPa)	
Required air quality	Class 3 (ISO 8573-1)	
Flow capacity	Over 100LPM (Sup=0.14MPa)	
Material	Aluminum die cast	Stainless steel 316
Weight	2.6kg	4.2kg
HART version*	HART 7	
Position transmitter*	Connection type	2 Wire
	Supply voltage	10~30V DC
Limit switch rating*	Mechanical type	AC 125V, 3A DC30V, 2A
	Proximity type	DC8.2V 8.2A

* Options

Product code

Model	TS800							
Standard type	TS800							
Remote type	TS820							
STS 316 type	TS805							
Acting type	Linear type	L						
	Rotary type	R						
Explosion proof type	Non-explosion proof	N						
	ATEX&IECEX	A						
	CCC&NEPSI KCS, EAC CSA/US	S						
Connection type	Conduit entry	Air connection						
	G1/2	PT1/4	1					
	G1/2	NPT1/4	2					
	NPT1/2	NPT1/4	3					
	M20	NPT1/4	4					
M20	G1/4	5						
Lever (Linear type)	10 ~ 80mm						1	
	70 ~ 150mm							2
	For tubeless actuator (30mm)							3
	For tubeless actuator (70mm)							4
Lever (Rotary type)	M6 x 39L							1
	NAMUR							5
Ambient Temp.	-30°C~85°C							S
	-40°C~85°C							L
	-60°C~85°C (For Russia EAC)							U
Communication	None							0
	4~20mA Position transmitter							1
	HART							2
	HART with 4~20mA Position transmitter							3
Limit switch (For TS800) & TS805)	None							0
	Mechanical type							M
	Proximity type							P
	With dome cover (Without Limit switch)							D
Cable length (For TS820)	5m							1
	10m							2
	User define (Less than 20 meters)							x

Dimension [Unit:mm]



tissin

Solutions for control valve system

tissin

Tissin Co.,Ltd. (주)티씬

201-1105, No 397, Seokchen-ro, Ojeong-gu,
Bucheon-si, Gyeonggi-do, Korea 14449

Tel : +82-32-624-4573, Fax : +82-32-624-4574

www.tissin.co.kr



Version: PC-800EN_05/2023

We reserve the right to make technical changes or modify
the contents of this document without prior notice.

Copyright © 2023 Tissin
All rights reserved.

Printed in Korea